



PRESSURE EVALUATION LOG



WELL : ROCKHOPPER-1 ST 1

FROM (m): 1950

TO (m): 3510

SCALE: 1/ 500

Country : AUSTRALIA
Region : TASMANIA
Field : ROCKHOPPER
Permit : T/18P
Well Type : APPRAISAL
Rig Name : KAN TAN 4

POSITION
Latitude : 39 47' 34.1828" S
Longitude : 145 26' 21.4660" E
X (m) : 366376.031
Y (m) : 5594075.423
RT-Sealevel (m MSL) : 26
RT-Seabed (m) : 100.3

CASING SHOE SIZE / DEPTH
762mm (30") at (m MDRT) : 157.00
340mm (13 3/8") at (m MDRT) : 961.00
245mm (9 5/8") at (m MDRT) : 1965.00

Spud Date : 20-01-2010
Total Depth Date : 03-02-2010
Total Depth (m MDRT) : 3482.0
Total Depth (m TVSS) : 3158.0
Status : P&A

ABBREVIATIONS

MW MUD WEIGHT NB NEW BIT
FV FUNNEL VISCOSITY RR RERUN BIT
PV PLASTIC VISCOSITY CB CORE BIT
YP YIELD POINT WOB WEIGHT ON BIT
FC FILTER CAKE RPM REVS PER MINUTE
SOL SOLIDS FLC FLOW CHECK
CR CIRCULATE RETURNS WL FILTRATE
SD SAND - % PR POOR RETURNS
S SALINITY - PPM NR NO RETURNS
RM MUD RESISTIVITY BG BACKGROUND GAS
RMF MUD FILTRATE TG TRIP GAS
C CARBIDE TEST STG SHORT TRIP GAS
LAT LOGGED AFTER TRIP CG CONNECTION GAS
DS DEVIATION SURVEY SG SWAB GAS
SVG SURVEY GAS

LITHOLOGY LEGEND

Dolomite

Calclrudite

Calcarenite

Calcsiltite

Calclutite

Sandy Claystone

Silty Claystone

Calcareous Claystone

Argil Calcilutite

Claystone

Siltstone

Sandstone

Coal

Intrusive Volcanics

Volcaniclastics

Tuff

Cement

Argil Siltstone

Sandy Siltstone

Calcareous Siltstone

Argil Sandstone

Calcareous Sandstone

Dolomitic Sandstone

Silty Sandstone

Calcareous

Dolomitic

Fossils

Foraminiferae

Carbonaceous

Chert

Pyrite

Glauconite

Mica

ENGINEERING

Test

FIT or LOT

Mud loss

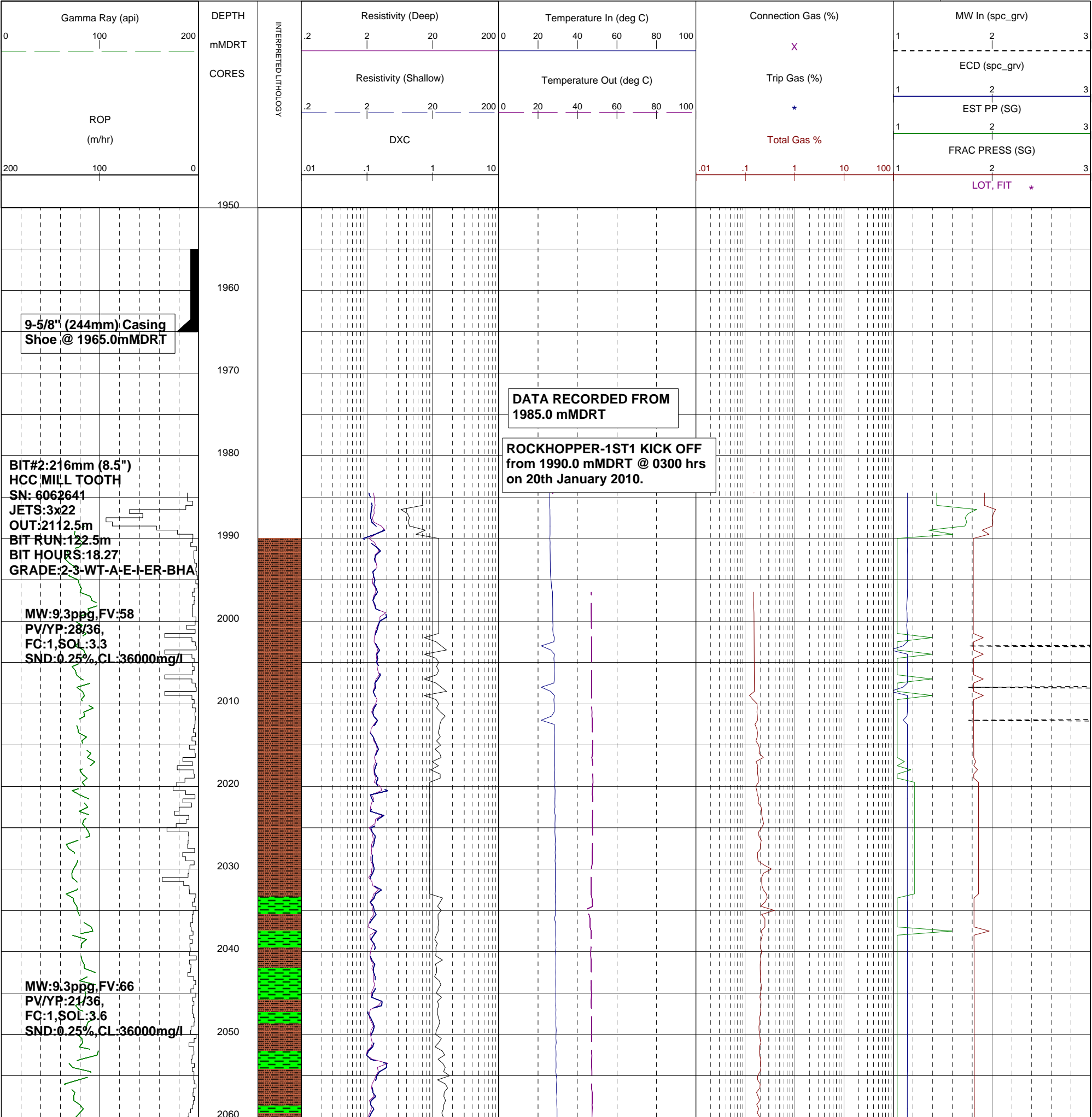
Mud gain

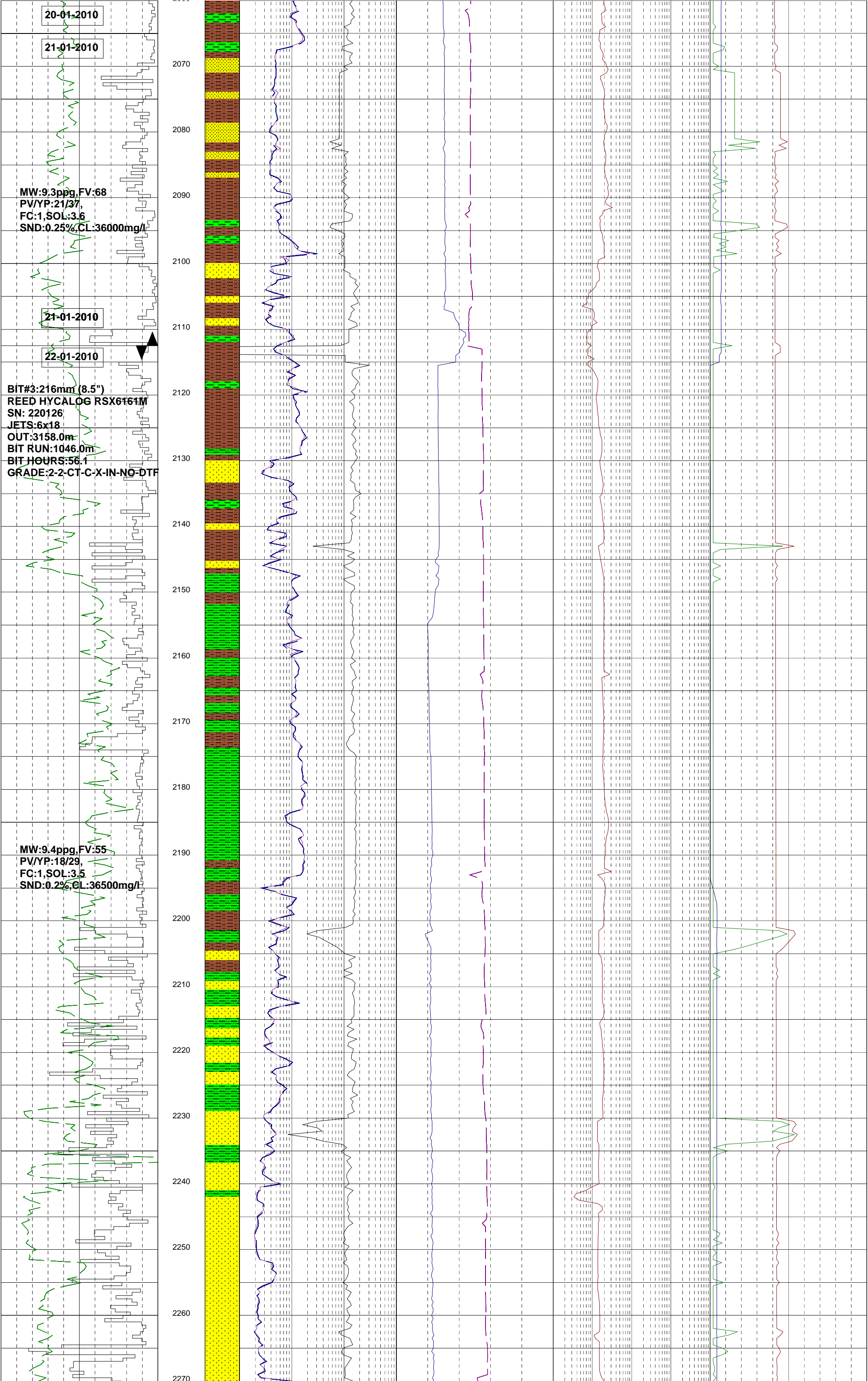
Deviation survey

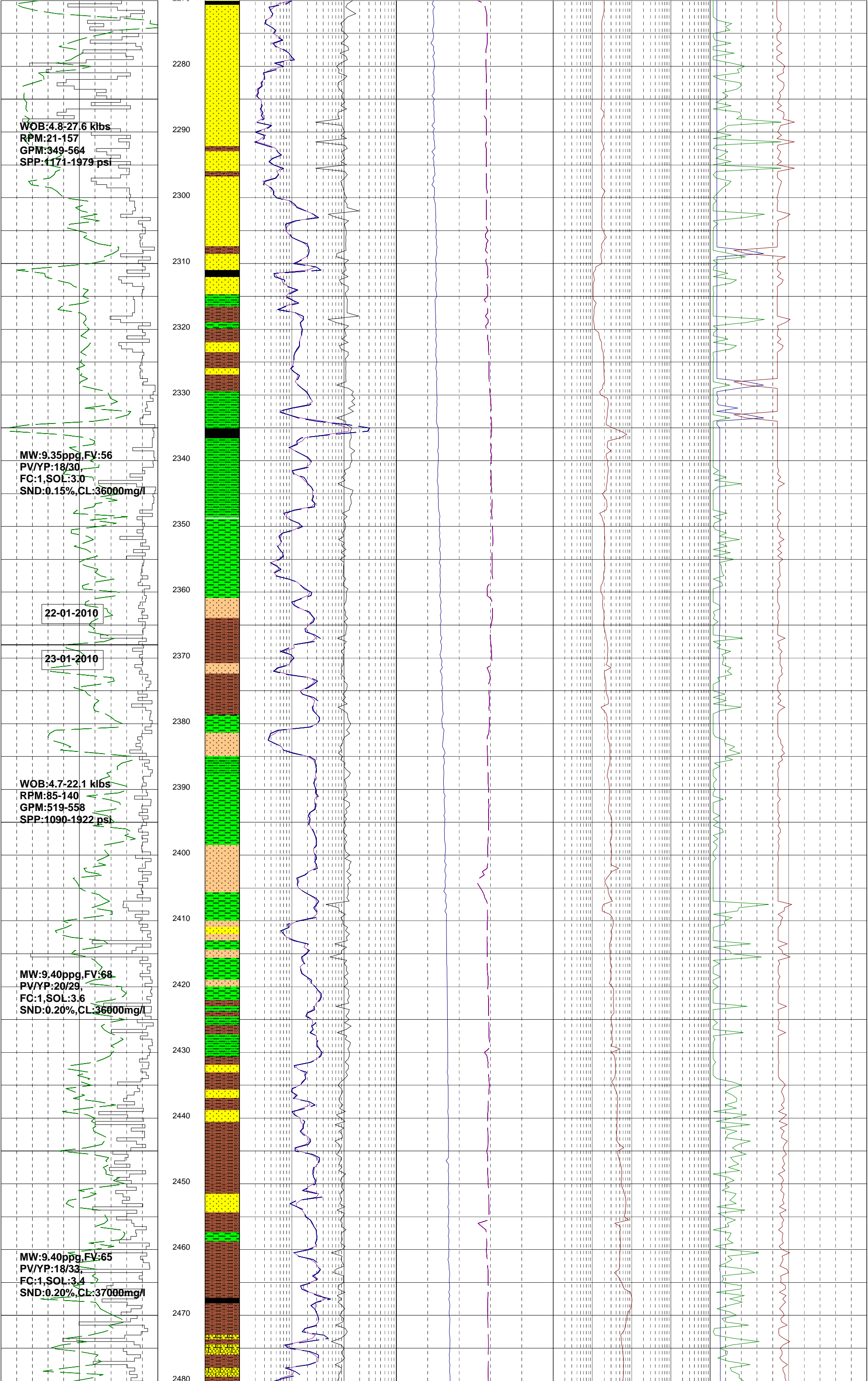
Core

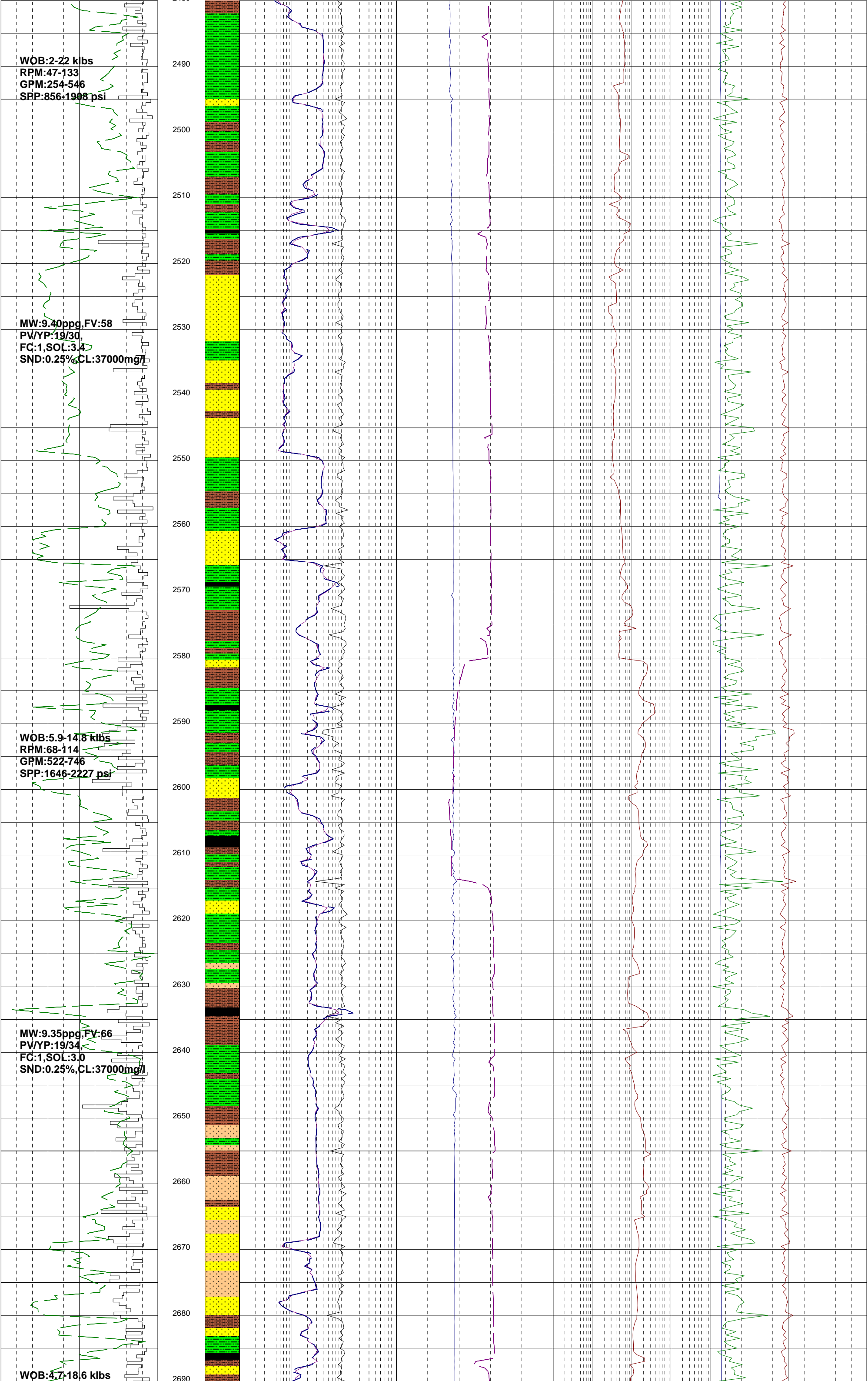
Shoe

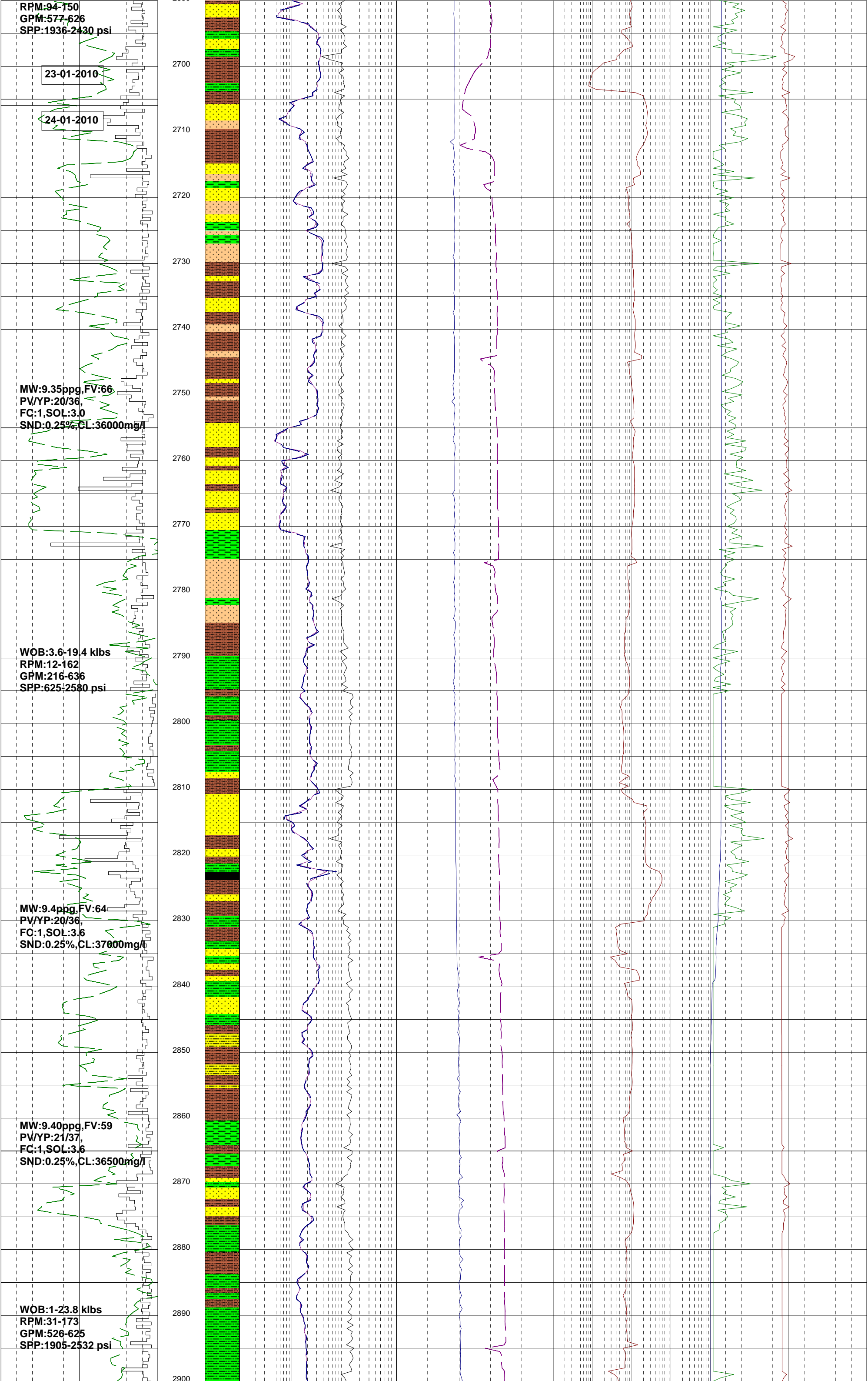
Calcimetry

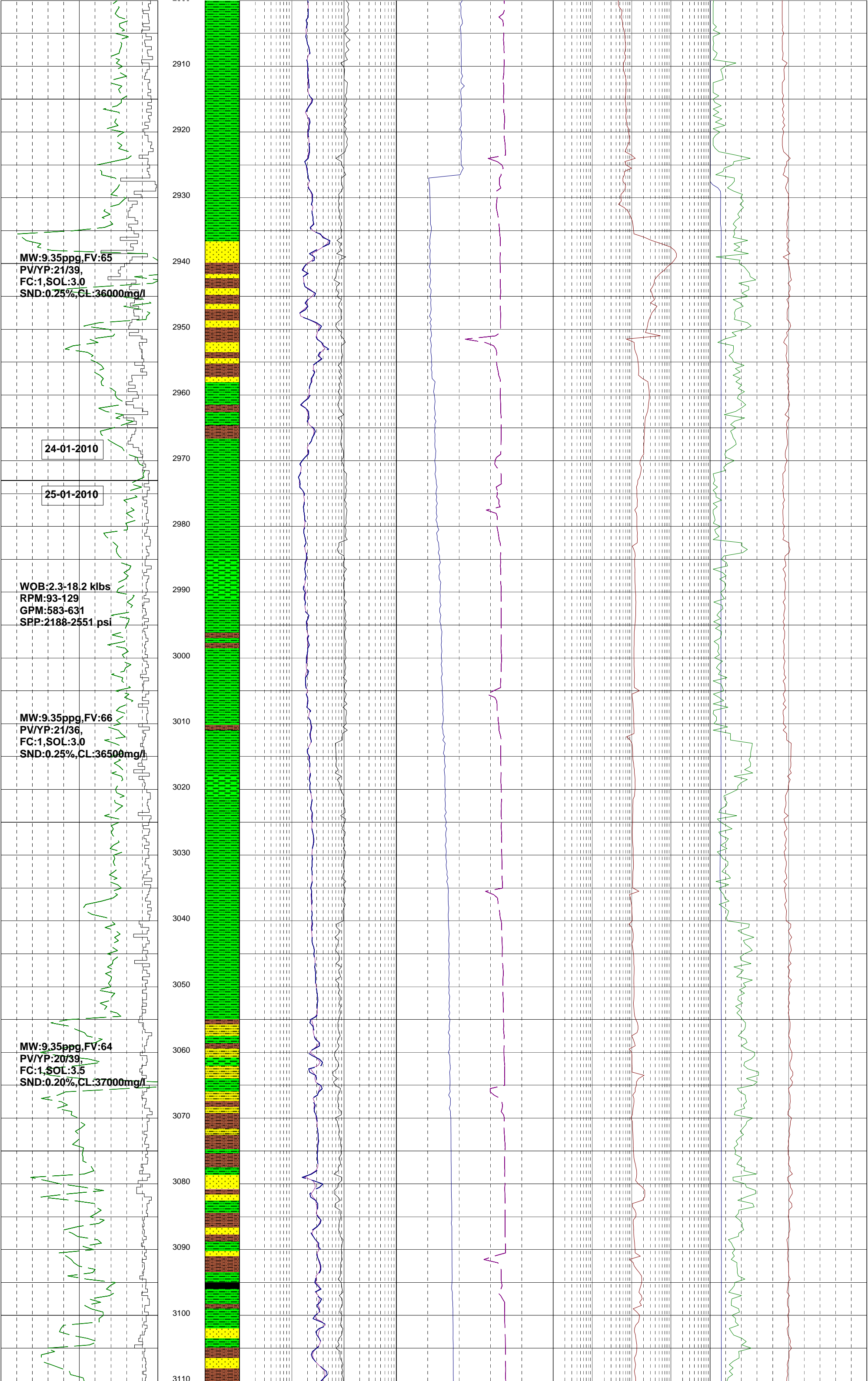


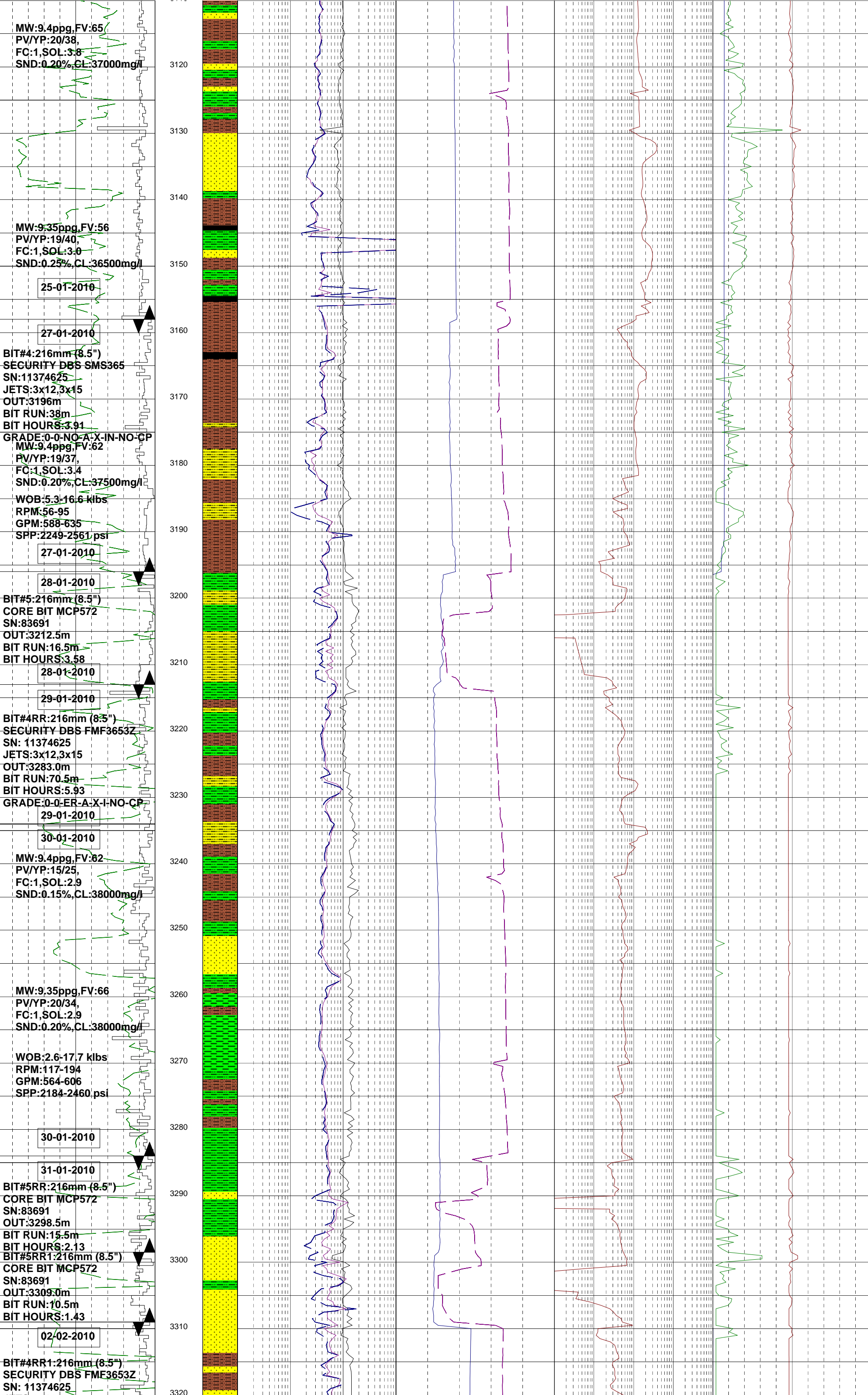












MW:9.4ppg,FV:65
PV/YP:20/38,
FC:1,SOL:3.8
SND:0.20%,CL:37000mg/l

MW:9.35ppg,FV:56
PV/YP:19/40,
FC:1,SOL:3.0
SND:0.25%,CL:36500mg/l

25-01-2010
27-01-2010
BIT#4:216mm (8.5")
SECURITY DBS SMS365
SN:11374625
JETS:3x12,3x15
OUT:3196m
BIT RUN:38m
BIT HOURS:3.91
GRADE:0-0-NO-A-X-IN-NO-CP
MW:9.4ppg,FV:62
PV/YP:19/37,
FC:1,SOL:3.4
SND:0.20%,CL:37500mg/l
WOB:5.3-16.6 klbs
RPM:56-95
GPM:588-635
SPP:2249-2561 psi

27-01-2010
28-01-2010
BIT#5:216mm (8.5")
CORE BIT MCP572
SN:83691
OUT:3212.5m
BIT RUN:16.5m
BIT HOURS:3.58

28-01-2010
29-01-2010
BIT#4RR:216mm (8.5")
SECURITY DBS FMF3653Z
SN: 11374625
JETS:3x12,3x15
OUT:3283.0m
BIT RUN:70.5m
BIT HOURS:5.93
GRADE:0-0-ER-A-X-I-NO-CP

29-01-2010
30-01-2010
MW:9.4ppg,FV:62
PV/YP:15/25,
FC:1,SOL:2.9
SND:0.15%,CL:38000mg/l

MW:9.35ppg,FV:66
PV/YP:20/34,
FC:1,SOL:2.9
SND:0.20%,CL:38000mg/l

WOB:2.6-17.7 klbs
RPM:117-194
GPM:564-606
SPP:2184-2460 psi

30-01-2010
31-01-2010
BIT#5RR:216mm (8.5")
CORE BIT MCP572
SN:83691
OUT:3298.5m
BIT RUN:15.5m
BIT HOURS:2.13
BIT#5RR1:216mm (8.5")
CORE BIT MCP572
SN:83691
OUT:3309.0m
BIT RUN:10.5m
BIT HOURS:1.43

02-02-2010
BIT#4RR1:216mm (8.5")
SECURITY DBS FME3653Z
SN: 11374625

JETS:3x12.3x15
OUT:3482.0m
BIT RUN:173.0m
BIT HOURS:15.6
GRADE:0-0-RR-A-X-I-NO-TD

MW:9.4ppg,FV:68
PV/YP:15/30,
FC:1,SOL:4.0
SND:0.20%,CL:37500mg/l

02-02-2010

03-02-2010

MW:9.4ppg,FV:67
PV/YP:15/29,
FC:1,SOL:4.0
SND:0.20%,CL:37500mg/l

WOB:4.1-19.8 klbs
RPM:47-245
GPM:233-609
SPP:776-2440psi

MW:9.4ppg,FV:57
PV/YP:19/36,
FC:1,SOL:3.7
SND:0.15%,CL:38500mg/l

MW:9.35ppg,FV:57
PV/YP:20/36,
FC:1,SOL:3.4
SND:0.20%,CL:37500mg/l

WOB:2.9-19.8 klbs
RPM:91-204
GPM:586-612
SPP:2354-2545psi

CIRCULATION TIME
FROM TD PRIOR TO
POOH=3.16HRS.

ROCKHOPPER-1 ST1 reached TD
of 3482.0mMDRT/3258.29mTVDR
on 3rd Feb 2010 @ 14.30 hrs.